

Sr. No.	Model No.	Nodes No. of Slaves	Protocol		Input Communication			Output		Configuration RS-485	Universal Data Types	Notification		Memory RTC for Failsafe Logging
			MQTT	TCP/IP Optional	RS-485	Ethernet (Optional)	RS-232 (Optional)	RS-485	GSM/4G			SMS	E-mail	
1	SIS4G485	48	✓	On-request	✓	Ethernet (Optional) ERS-485 Converter	RS-232 (Optional) RS-232 to RS-485	✓	✓	✓		✓	✓	✓
2	SIS4D096	96	✓	On-request	✓	Ethernet (Optional) ERS-485 Converter	RS-232 (Optional) RS-232 to RS-485		✓	✓	✓	✓ (From Cloud)	✓ (From Cloud)	

Product description :

- SIS IoT Gateways sends sensor data to cloud-hosted software platform of Ambetronics. Highly scalable offers unlimited sensor data storage, powerful analytics and search, real-time visibility and alerts and intuitive dashboards
- Remotely Monitor Industrial Sensors, from Pressure to Temperature, Tank Levels, Flow, Gas Levels etc.
- SIS operates effectively as a stand-alone Industrial Monitoring Solution

Features :

- Plug & Play, easy configuration
- Battery-powered Real Time Clock (RTC)
- Watchdog function ensures hardware operation control of selected services
- Operates autonomously while network is unavailable
- Software based programming for ease of use and faster setting up
- Multiple slave devices can be configured to the same Module
- Buzzer for fault detection or connection issues with L.E.D. indication
- Compact durable housing made of ABS Plastic
- Optimised for areas with weak cellular connectivity

Technical Specifications:

DEVICE CONFIGURATION

- Nodes : 48 / 96 (MODBUS Slaves)
- Configuration : AEPL- IIoT PC Software
- Operating Mode : Programming & applications

GSM SPECIFICATIONS

- Cellular Connectivity : 4G
- SIM Slots : 02 Nos.

LED INDICATION

- Healthy : Blue / Red
- ALARM : Blue / Red
- COMM. Port : Blue / Red
- GSM Status : Blue / Red

SERIAL INTERFACE

- Interface Mode : RS-485 (RS-232/ Ethernet Optional)
- Supported Baud Rates : 9600, 19200, 38400, 57600, 115200
- Parity : None, Odd, Even
- Stop Bits : 1, 2
- Protocol Supported : MODBUS RTU, MODBUS TCP/IP and MODBUS over TCP/IP

POWER

- Input : 9V to 24VDC via DC Adaptor

ALERT & NOTIFICATION

- SMS : 10 Mobile Nos.
- E-mail : 05 Email address
- Local Alarm : 2 x settable Local alarms (Buzzer & L.E.D. Indication)

CLOUD CONNECTIVITY

- Protocols : MQTT (TCP/IP Optional)
- Data Format : JSON
- Data Interval : 1 to 60 minute

ENVIRONMENTAL

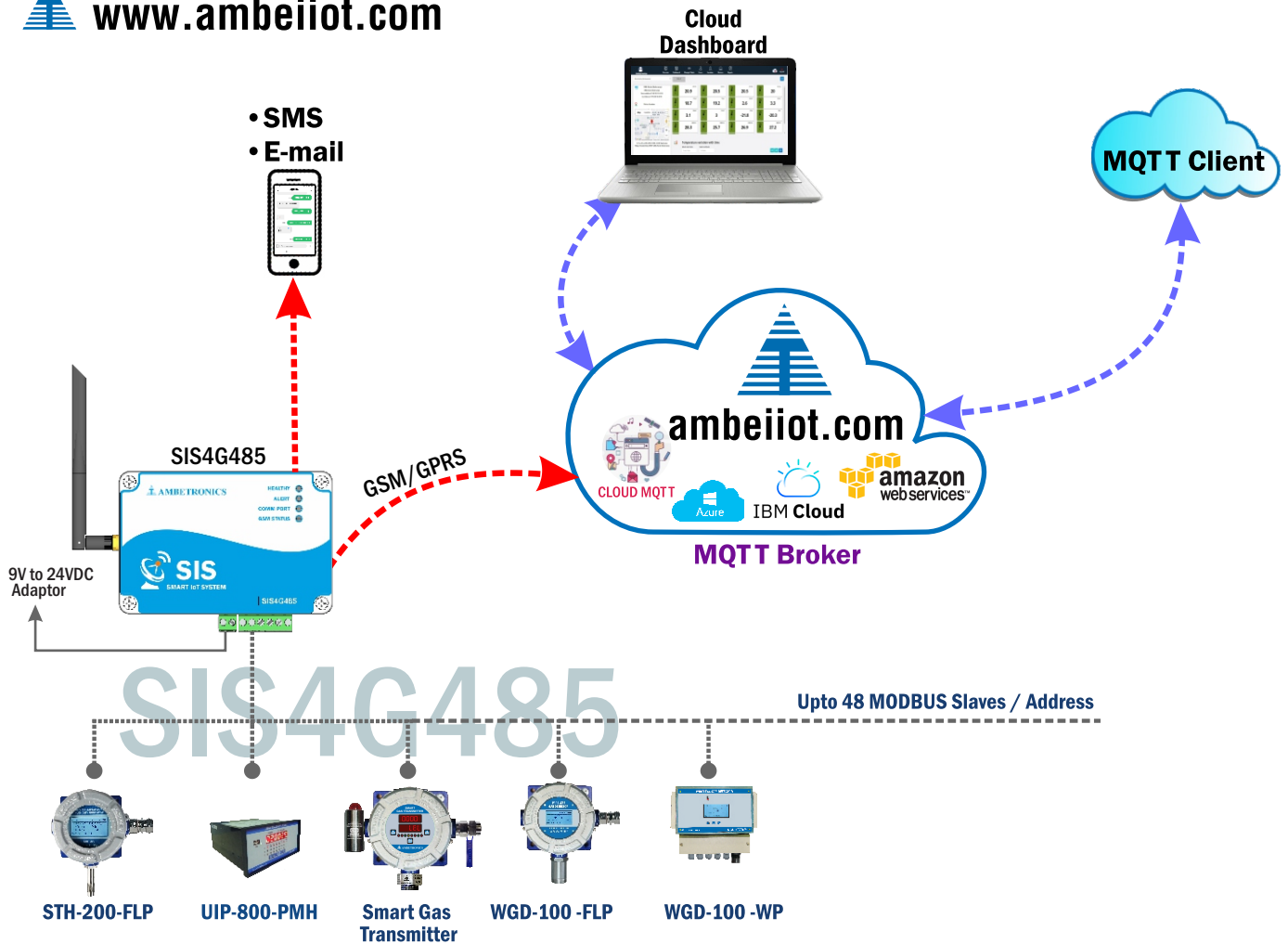
- Extended Operating Temp.: -20°C to 50°C
- Extended Storage Temp. : -20°C to 60°C

PHYSICAL DIMENSIONS

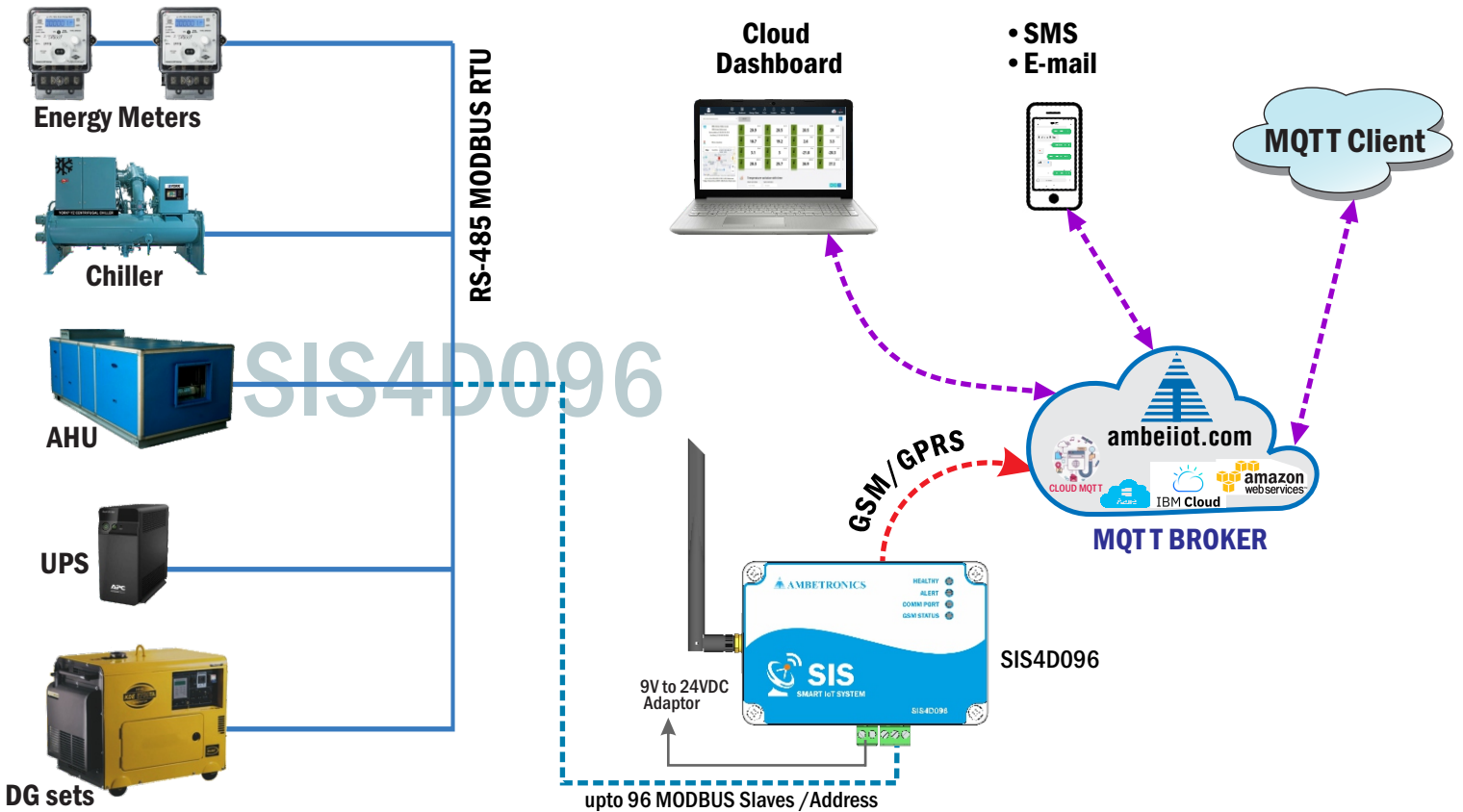
- Dimensions : 150 mm x 90 mm x 55 mm (with connector and Antenna)
- Weight : 270 grms

APPLICATIONS :

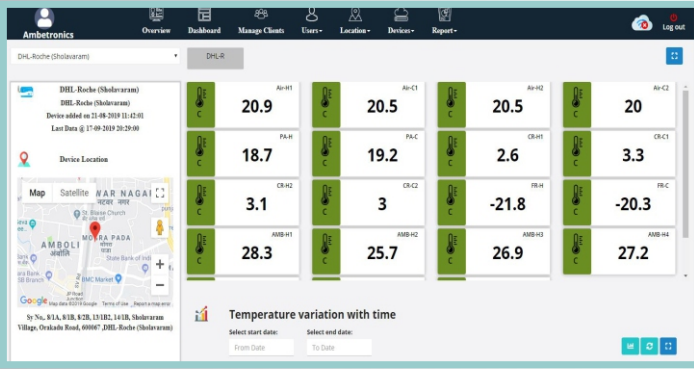
- Fire and Security Panels
- Vending Machines
- Remote equipment management
- Access Control
- Industrial Control
- Home Automation
- Instrumentation
- Power Management



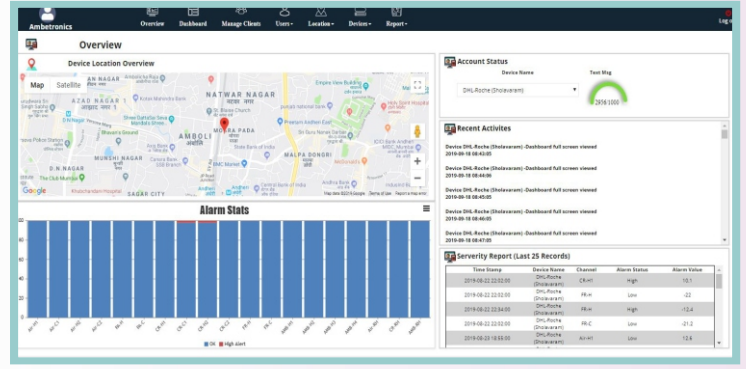
Energy Management System



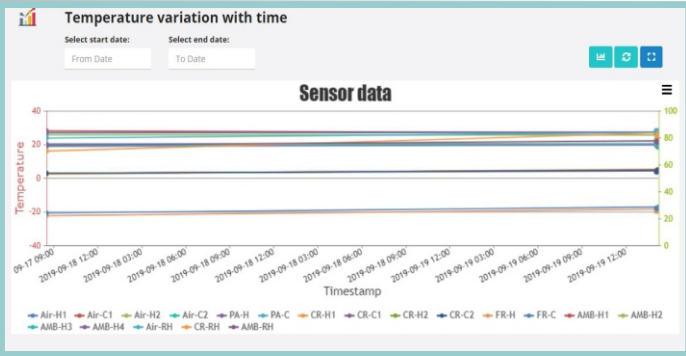
DASHBOARD



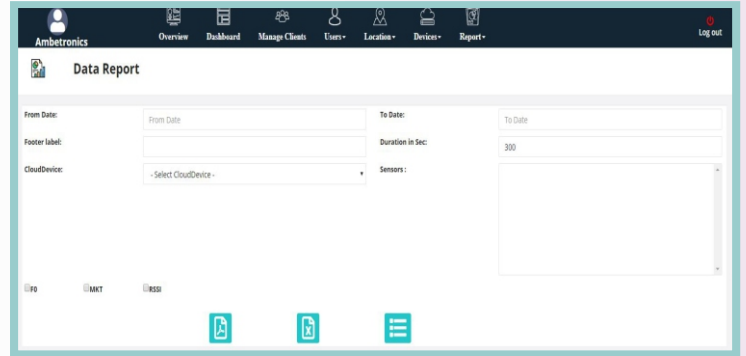
OVER VIEW



LIVE GRAPH




REPORTS



Notification (SIS4G485)

E-mail Notification

 SIS-AMBETRONICS <tixi@ambetronics.com>
SIS-AMBETRONICS @07/07/20 14:34

CH:02 (TRH DETECTOR)
ST: AL-1-2:HIGH
PV: +79.5 %RH
TM: 07/07/20 14:34
LOC: DEMO ROOM
UID: SIS367572
RSSI: -81

 SIS-AMBETRONICS <tixi@ambetronics.com>
SIS-AMBETRONICS @07/07/20 14:35

CH:01 (TRH DETECTOR)
ST: AL-1-2:HIGH
PV: +27.9 DEGC
TM: 07/07/20 14:35
LOC: DEMO ROOM
UID: SIS367572
RSSI: -81

Notification (SIS4G485)

SMS Notification

CH:02 (TRH DETECTOR)
ST: AL-1-2:HIGH
PV: +79.5 %RH
TM: 07/07/20 14:34
LOC: DEMO ROOM
UID: SIS367572
RSSI: -81

6:17 pm

CH:01 (TRH DETECTOR)
ST: AL-1-2:HIGH
PV: +27.9 DEGC
TM: 07/07/20 14:35
LOC: DEMO ROOM
UID: SIS367572
RSSI: -81

5:17 pm

Manufactured by :

 **AMBETRONICS ENGINEERS PVT. LTD.**

17-B, Tarun Industrial Estate, Mogra Pada, New Nagardas Road, Andheri (E), Mumbai-400 069, India.
Mobile : +91-9326610183 • +91-9167418106 • Tel.: +91-22-61673052/53
E-mail : iot@ambetronics.com • manan@ambetronics.com • Web: www.ambetronics.com



Follow us on

